

SealSuite客户端使用说明

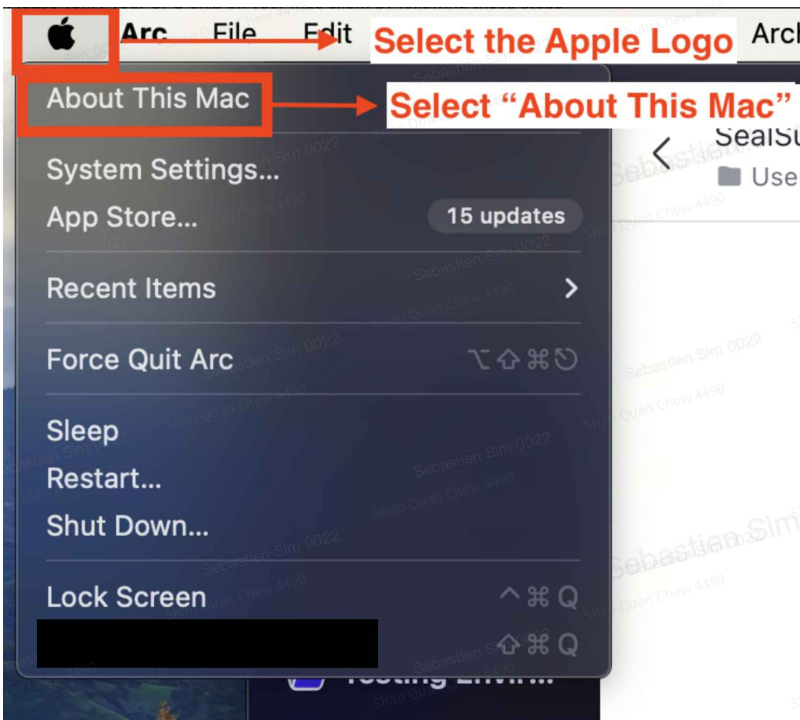
如何获取SealSuite客户端

1. Windows客户端:

https://cdn.isealsuite.com/windows/SealSuite_Windows_x86_v2.2.13_s1017_101aa1.exe

2. Mac客户端

a. 请查询机器芯片厂商



若是Apple M1/M2/M3 芯片:

https://cdn.isealsuite.com/mac/SealSuite_Mac_arm64_v2.2.13_r3946_3ae001.pkg

若是Intel芯片: https://cdn.isealsuite.com/mac/SealSuite_Mac_x64_v2.2.13_r3946_1aeba8.pkg

手机

1. 安卓客户端:

https://cdn.isealsuite.com/android/FeiLian_Android_v2.2.12_s1043_5385b4.apk

2. 苹果客户端: App Store搜索SealSuite安装即可

如何使用SealSuite客户端

我们在完成配置后，会为企业管理员提供如下信息（需要使用下面的信息完成客户端登录）

1. 企业识别码：xxx
2. 客户端登录账号及密码

1. 打开SealSuite客户端



Please enter the enterprise identification number

Verify activation

The current client is not activated, please open the web page to complete the activation or contact the enterprise administrator to obtain the enterprise identification code

2. 输入企业识别码并点击验证激活



Enter your Enterprise ID here

Verify activation

The current client is not activated, please open the web page to complete the activation or contact the enterprise administrator to obtain the enterprise identification code

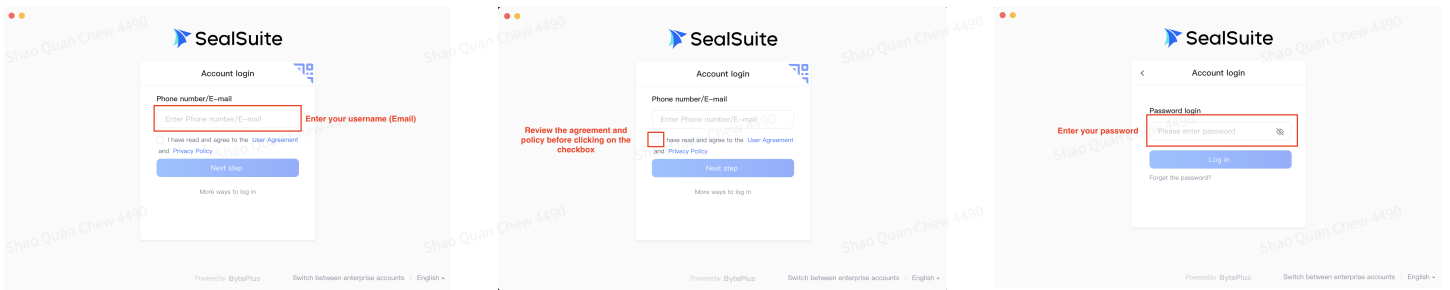


Click on "Verify activation"

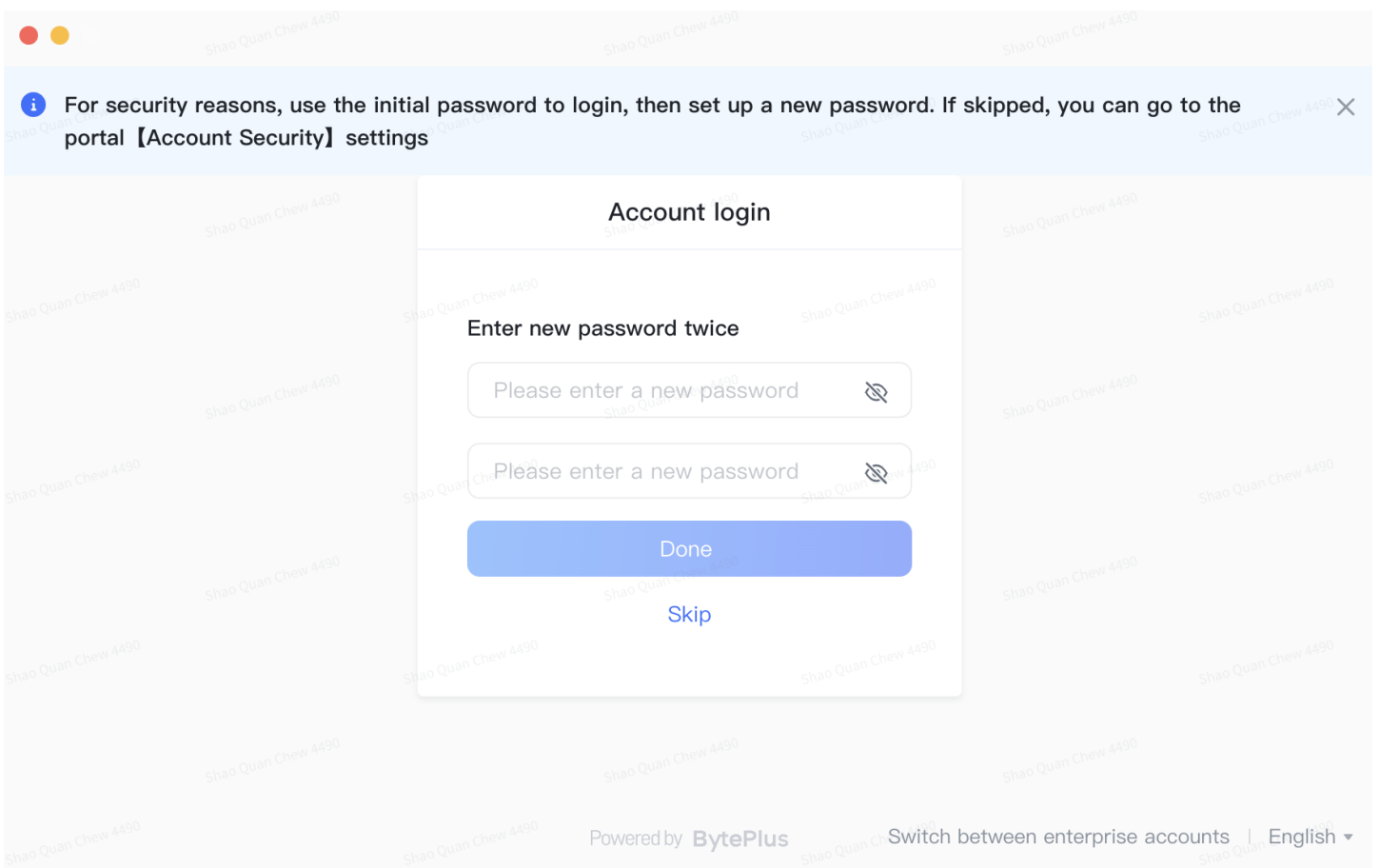
Verify activation

The current client is not activated, please open the web page to complete the activation or contact the enterprise administrator to obtain the enterprise identification code

3. 使用账号密码登录客户端

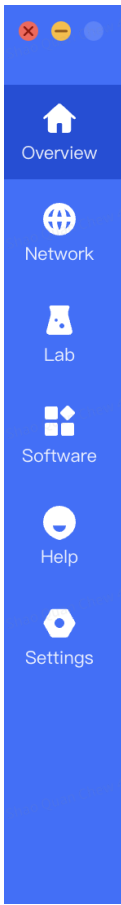


4. 重置密码



5. 点击下图所示按钮，连接到SealSuite加速网络，按钮显示绿色即为连接成功

! 注意：链接前，得在管理平台配置好VPN节点



VPN Network

00:00:07
Online time

Split ▾
Current mode

AUTO **C** ▾
Current server

On

Applications

[All >](#)

Toolbox

- Network Diagnostics
- Cloud Print
- Problem feedback
- Wi-Fi
- Guest Wi-Fi
- IT HelpDesk